

### **7.1.1 Facilities Provided for Women on Campus**

The HEI is deeply committed to fostering the abilities, aspirations, and professional skills of all stakeholders, without any form of gender bias. Extensive efforts have been undertaken to eliminate gender-based discrimination and create a safe, secure, and conducive work environment for women on the premises. The Institute's unwavering commitment to promoting gender sensitivity is evident in the provision of various facilities.

**A. Safety and security:** The Institute's commitment to gender sensitivity and safety is evident in its unique safety and security measures. A full-time Warden (Rector) has been appointed to ensure the safety and security of Rajmata Jijau Girl's hostel. Two guards are deputed for security reasons by the agency hired by the Institute. CCTV cameras are installed at prominent locations for 24-hour surveillance. A complaint box is also placed in the premises to collect suggestions and complaints from the stakeholders concerning any abuse or scope for improvements. The Institute has constituted Anti-ragging Committee, Internal Complaint Committee and Grievance Redressal & Sexual Harassment Committee to monitor and address the women's safety, security and social issues on premises. A number of students and staff visit the student health centre as per the need for any health issues. Fire extinguishers are installed in hostels and other places in the Institute, and Mock Drills are conducted on a regular basis to take precautionary measures during fire and emergency. The Institute also runs a short-term course on "Awareness of safety knowledge among the students". The women's empowerment cell regularly organized awareness programmes and workshops to promote gender amity and women's empowerment. The Institute also organizes workshop on stress management, yoga and meditation, self-defense, health and hygiene, etc.

**B. Counseling:** The Institute's commitment to personal and professional development is evident in the role of the "Student Mentor Cell". This cell is dedicated to fostering healthy relationships between students and teachers, ensuring the academic and professional performance of the students, and inculcating human values. "Deeksharambh" – A Student Induction Programme is organized at the start of the academic year, and mentor-mentee groups are formed. The mentor conducts regular meetings and discussions on any problem such as academic, financial, psychological, etc. where counseling and guidance. Admission committee is also constituted to counsel the student during admission. Class teachers are also

**Ahmednagar Jilha Maratha Vidya Prasarak Smaj's**  
**NEW ARTS, COMMERCE AND SCIENCE COLLEGE, PARNER**  
**Dist.-Ahmednagar, Pin-414302**  
**Internal Quality Assurance Cell (IQAC) 2023-24**

---

appointed for observing the attendance and academic performance of the students.

**C. Common Rooms:** The Institute's commitment to providing equal facilities is evident in the provision of separate standard rooms for boys and girls. These common rooms have basic amenities for students.

**D. Daycare centre:** A daycare facility was established in Rajmata Jijau Girls' Hostel for the children of teaching and administrative staff and students. Various activities are organised for the different age groups. Breakfast, lunch, and snacks are served during the day.

**E. Others:** There is a separate reading room for girls' students. Ample parking space is reserved for women staff and students. From a sanitation point of view, washrooms are made available in various locations on the premises. An automated sanitary napkin vending machine has also been installed in these washrooms to promote menstrual health and hygiene.

  
**IQAC COORDINATOR**  
New Art's, Commerce & Science College  
Parner, Dist. Ahmednagar

  
**Dr. L. S. Matkar**  
**PRINCIPAL**  
New Arts, Commerce & Science  
College, Parner, Dist. Ahmednagar

**Ahmednagar Jilha Maratha Vidya Prasarak Smaj's  
NEW ARTS, COMMERCE AND SCIENCE COLLEGE, PARNER  
Dist.-Ahmednagar, Pin-414302  
Internal Quality Assurance Cell (IQAC) 2023-24**

---

\*\_



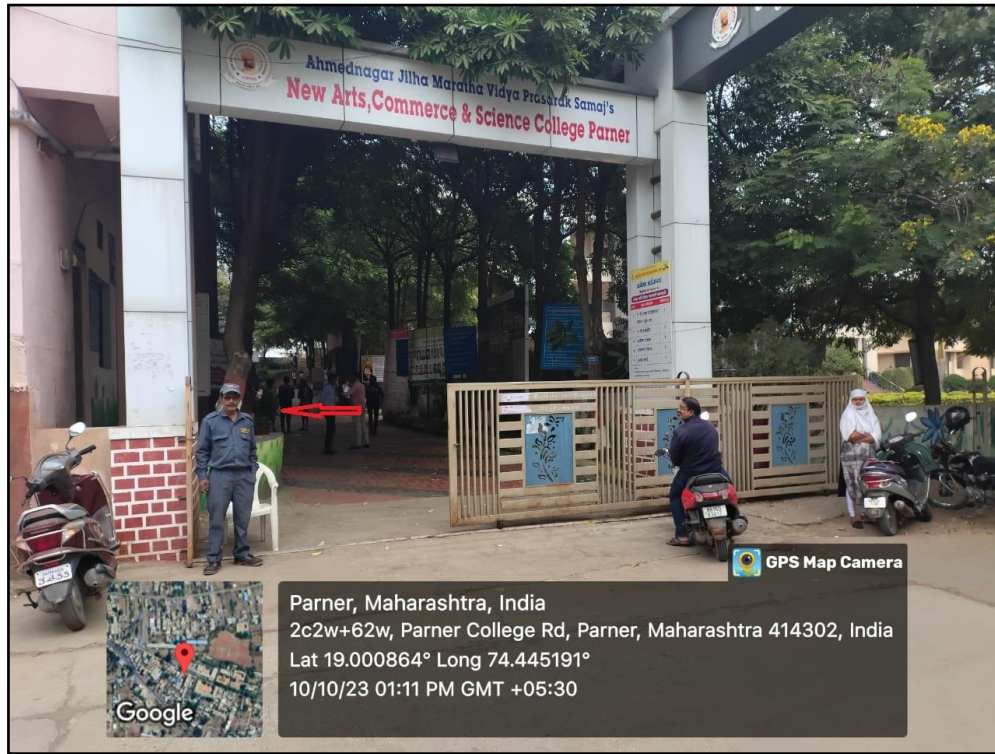
**Picture 1: CCTV Surveillance System at Rajmata Jijau Girl's hostel**



**Picture 2: CCTV Surveillance System at Rajmata Jijau Girl's hostel**

**Ahmednagar Jilha Maratha Vidya Prasarak Smaj's  
NEW ARTS, COMMERCE AND SCIENCE COLLEGE, PARNER  
Dist.-Ahmednagar, Pin-414302  
Internal Quality Assurance Cell (IQAC) 2023-24**

---



**Ahmednagar Jilha Maratha Vidya Prasarak Smaj's  
NEW ARTS, COMMERCE AND SCIENCE COLLEGE, PARNER  
Dist.-Ahmednagar, Pin-414302  
Internal Quality Assurance Cell (IQAC) 2023-24**

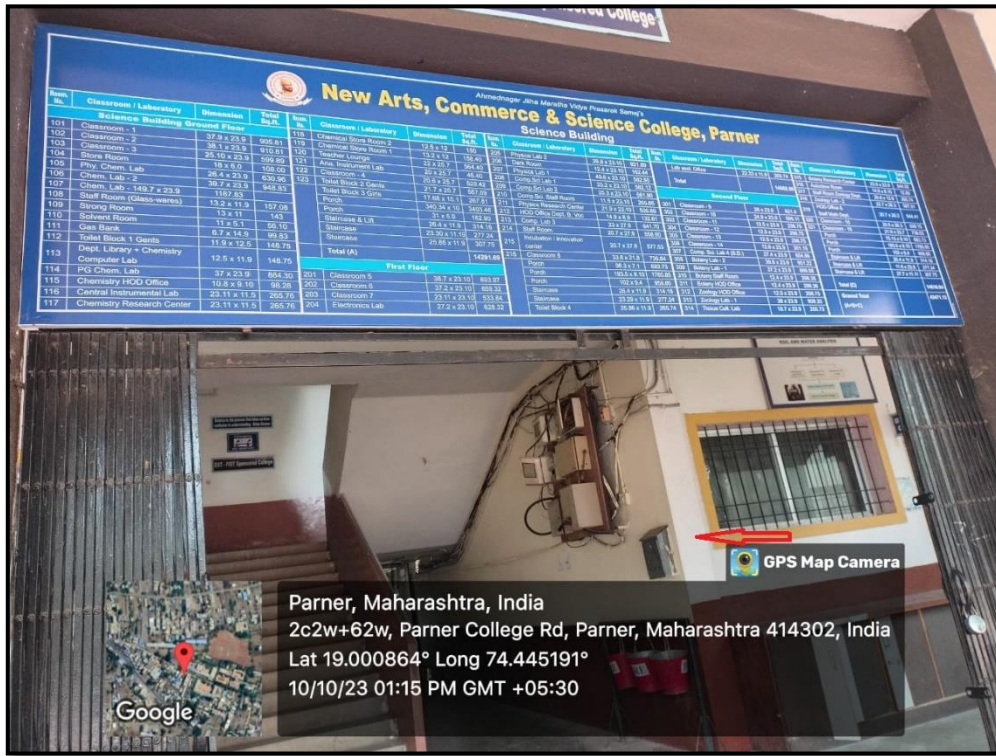


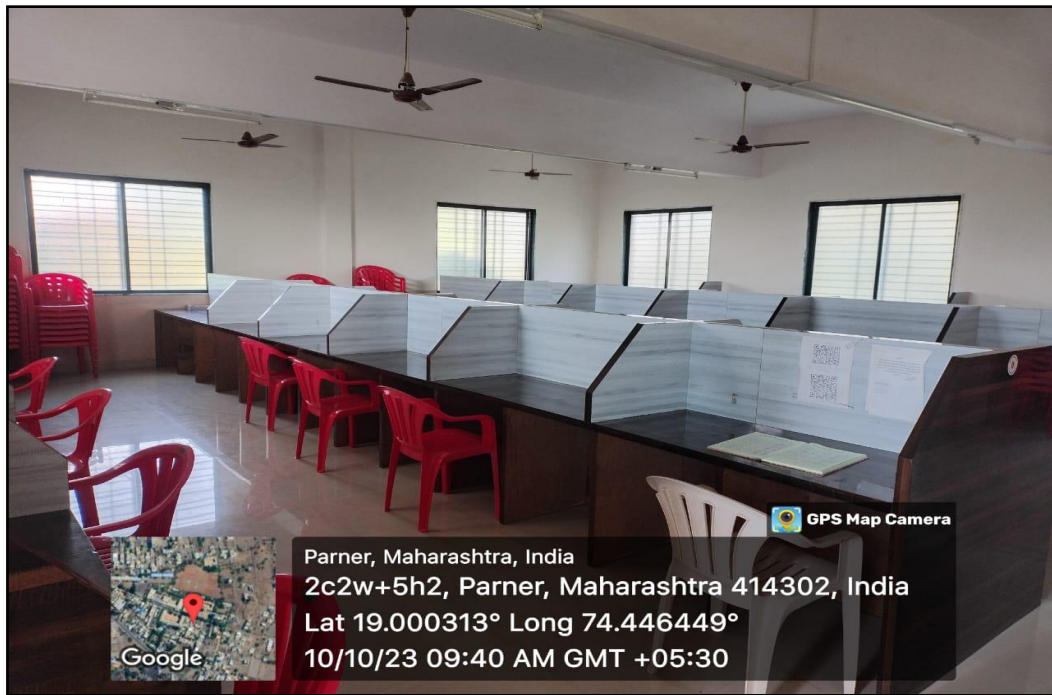
**Picture 5: Suggestion Box at Girls Hostel**



**Picture 6: Suggestion Box at Knowledge Resource Center (Library)**

**Ahmednagar Jilha Maratha Vidya Prasarak Smaj's  
NEW ARTS, COMMERCE AND SCIENCE COLLEGE, PARNER  
Dist.-Ahmednagar, Pin-414302  
Internal Quality Assurance Cell (IQAC) 2023-24**





Picture9 : Girl's Reading Room



Picture 10: Day Care Center

**Ahmednagar Jilha Maratha Vidya Prasarak Smaj's  
NEW ARTS, COMMERCE AND SCIENCE COLLEGE, PARNER  
Dist.-Ahmednagar, Pin-414302  
Internal Quality Assurance Cell (IQAC) 2023-24**

---



**Picture 11: Washroom Facilities for Ladies (Behind the Science Building)**



**Picture 12: Washroom Facilities for Ladies at Rajmata Jijau Girl's hostel**



**Ahmednagar Jilha Maratha Vidya Prasarak Smaj's  
NEW ARTS, COMMERCE AND SCIENCE COLLEGE, PARNER  
Dist.-Ahmednagar, Pin-414302  
Internal Quality Assurance Cell (IQAC) 2023-24**

---



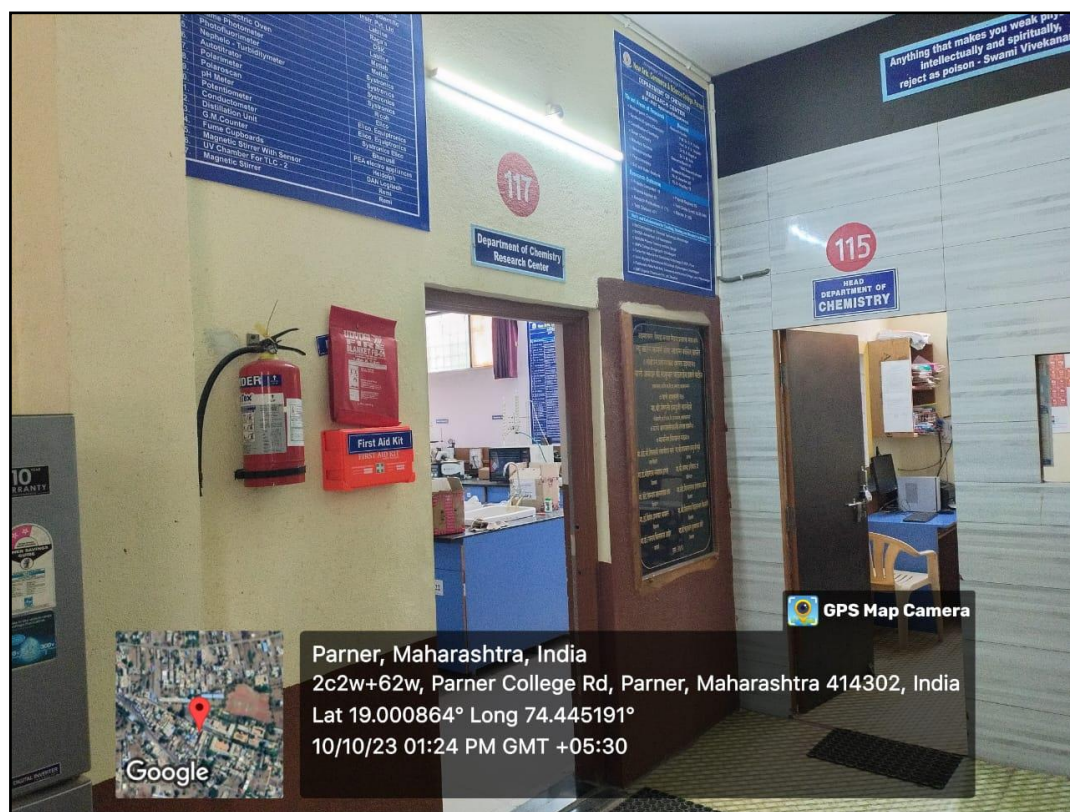
**Picture 13: Washroom Facilities for Ladies at Ground**



**Picture 14: Sanitary Napkin Vending Machine in the Washroom Facility (Girls Hostel)**

**Ahmednagar Jilha Maratha Vidya Prasarak Smaj's  
NEW ARTS, COMMERCE AND SCIENCE COLLEGE, PARNER  
Dist.-Ahmednagar, Pin-414302  
Internal Quality Assurance Cell (IQAC) 2023-24**

---

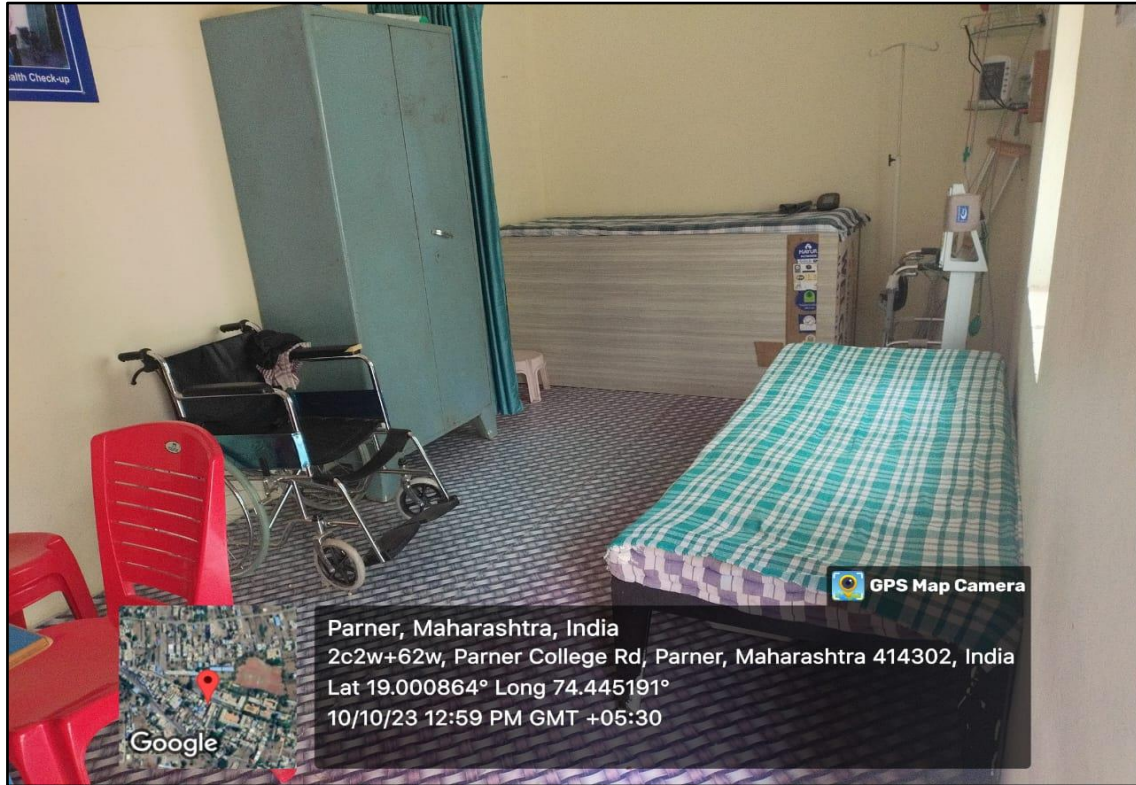


**Picture 15 : Laboratory Safety (First Aid Box and Fire Extinguisher)**

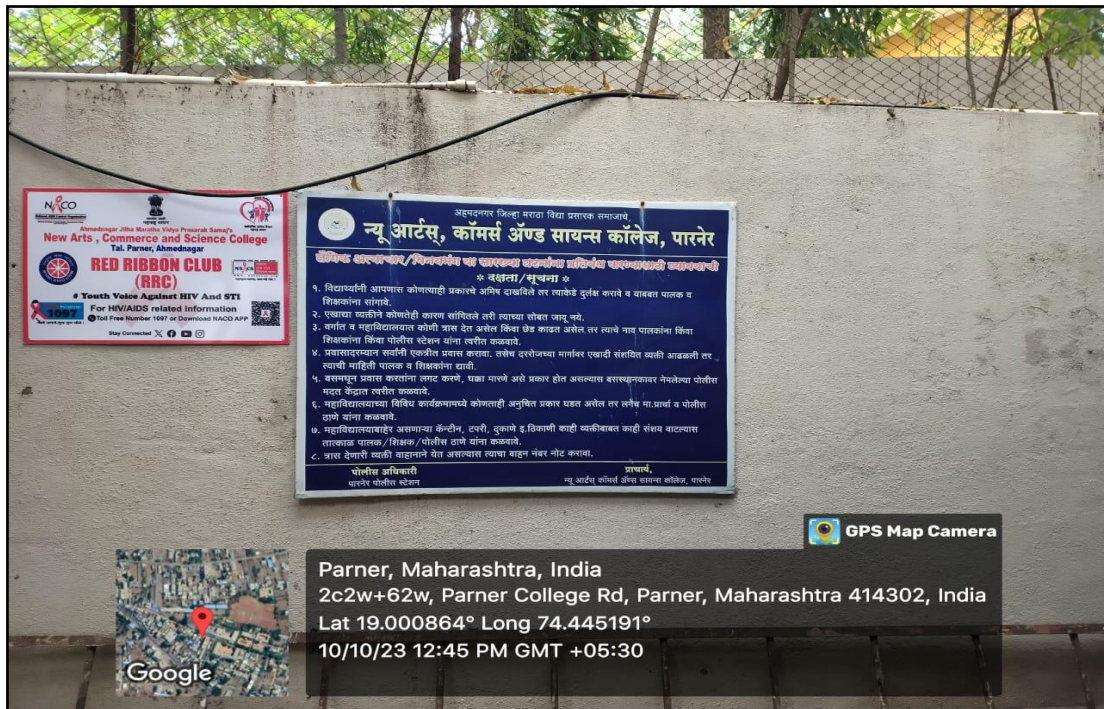


**Picture 16: Laboratory Safety (Eye Shower)**

**Ahmednagar Jilha Maratha Vidya Prasarak Smaj's  
NEW ARTS, COMMERCE AND SCIENCE COLLEGE, PARNER  
Dist.-Ahmednagar, Pin-414302  
Internal Quality Assurance Cell (IQAC) 2023-24**



**Picture 17: Health Center**



**Picture 18: Signage Board for Prohibition of Sexual Harassment**

**Ahmednagar Jilha Maratha Vidya Prasarak Smaj's  
NEW ARTS, COMMERCE AND SCIENCE COLLEGE, PARNER  
Dist.-Ahmednagar, Pin-414302  
Internal Quality Assurance Cell (IQAC) 2023-24**

---



**Picture 19: Signage Board for Prohibition of Sexual Harassment**