

### **7.1.1 Facilities Provided for Women on Campus**

The HEI is very determined about the abilities, aspirations, and professional skills of its stakeholders without any gender bias. A group of extensive efforts is taken to exclude gender-based discrimination and to develop a safe, secure and conducive work environment for women on the premises. The institute strives to endorse gender sensitivity by providing the following facilities such as:

- A. Safety and security:** A full-time Warden (Rector) is appointed to ensure safety and security in Rajmata Jijau Girl's hostel. Two guards are deputed for security reasons by the agency hired by the institute. CCTV cameras are installed at prominent locations for 24 hrs surveillance. A complaint box is also placed on the premises to collect suggestions and complaints from the stakeholders concerning any abuse or scope for improvements. The institute has constituted Anti-ragging Committee, Internal Complaint Committee, and Grievance Redressal & Sexual Harassment Committee to monitor and address the safety, security, and social issues of the women on-premises. Several students and staff visit the student health center as per the need in any health issue. Fire extinguishers are installed in hostels and other places in the Institute and Mock Drills are conducted on regular basis to take precautionary measures during fires and emergencies. The Institute also runs a short-term course on "Awareness of safety knowledge among the students". The women empowerment cell organized awareness programs and workshops regularly to promote gender amity and women empowerment. The Institute also organizes workshops on stress management, yoga, meditation, self-defense, health, hygiene, etc.
- B. Counseling:** The institute has a "Student Mentor Cell" for developing a healthy relationship between students and teachers, ensuring the academic and professional performance of the students, and inculcating human values too. "Deeksharambh" – A Student Induction Programme is organized at the start of the academic year and mentor-mentee groups are formed. The mentor conducts regular meetings and discussions on any problem such as academic, financial, psychological, etc. where counseling and guidance. The admission committee is also constituted to counsel the student at the time of admission. Class teachers are also appointed for observing the attendance and academic performance of the students.
- C. Common Rooms:** There are separate common rooms for boys and girls. These common rooms are provided with basic amenities for students.

- D. Daycare center:** A daycare facility was established in Rajmata Jijau Girl's hostel for the children of teaching and administrative staff and students. Various activities are organized for the different age groups. Breakfast, lunch, and snacks are served during the day.
- E. Others:** There is a separate reading room for girls' students. Ample parking space is reserved for women staff and students. From a sanitation point of view, several washrooms are made available at various locations on the premises. An automated sanitary napkin vending machine has also been installed in this washroom for promoting menstrual health and hygiene.

**IQAC Coordinator**

**Principal**

**Ahmednagar Jilha Maratha Vidya Prasarak Samaj's  
NEW ARTS, COMMERCE AND SCIENCE COLLEGE, PARNER  
Dist.-Ahmednagar, Pin-414302  
Internal Quality Assurance Cell (IQAC) 2021-22**

---



**Figure 1: CCTV Surveillance System at Rajmata Jijau Girl's hostel**



**Figure 2: CCTV Surveillance System at Rajmata Jijau Girl's hostel**

**Ahmednagar Jilha Maratha Vidya Prasarak Samaj's  
NEW ARTS, COMMERCE AND SCIENCE COLLEGE, PARNER  
Dist.-Ahmednagar, Pin-414302  
Internal Quality Assurance Cell (IQAC) 2021-22**

---



**Figure 3: Security Guard at College Entrance**



**Figure 4: Security Guard at parking area**

**Ahmednagar Jilha Maratha Vidya Prasarak Samaj's  
NEW ARTS, COMMERCE AND SCIENCE COLLEGE, PARNER  
Dist.-Ahmednagar, Pin-414302  
Internal Quality Assurance Cell (IQAC) 2021-22**

---



**Figure 5: Suggestion Box at Administrative Building**



**Figure 6: Suggestion Box at Knowledge Resource Center (Library)**



**Ahmednagar Jilha Maratha Vidya Prasarak Samaj's  
NEW ARTS, COMMERCE AND SCIENCE COLLEGE, PARNER  
Dist.-Ahmednagar, Pin-414302  
Internal Quality Assurance Cell (IQAC) 2021-22**

---



**Figure 9: Fire Extinguisher at Rajmata Jijau Girl's hostel**



**Figure 10: Ladies Common Room**

**Ahmednagar Jilha Maratha Vidya Prasarak Samaj's  
NEW ARTS, COMMERCE AND SCIENCE COLLEGE, PARNER  
Dist.-Ahmednagar, Pin-414302  
Internal Quality Assurance Cell (IQAC) 2021-22**

---



**Figure 11: Girl's Reading Room**



**Figure 12: Girl's Reading Room**





Figure 13: Day Care Center



Figure 14: Day Care Center



**Figure 15: Washroom Facilities for Ladies (Behind the Science Building)**



**Figure 16: Washroom Facilities for Ladies at Rajmata Jijau Girl's hostel**



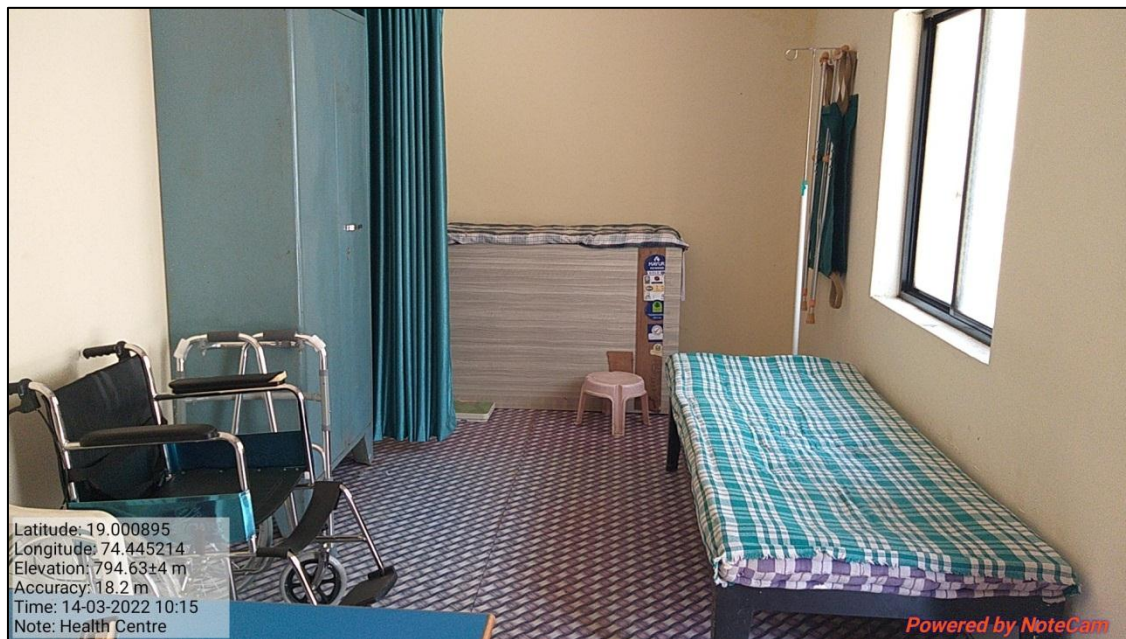
**Figure 17: Washroom Facilities for Ladies at Ground**



**Figure 18: Sanitary Napkin Vending Machine in the Washroom Facility (Girls Hostel)**



**Figure 19 : Laboratory Safety (First Aid Box and Fire Extinguisher)**



**Figure 20: Health Center**